



SEALS. REALLY. WELL.

CUTS. REALLY. WELL.

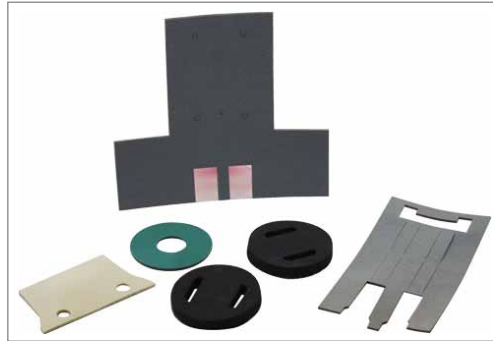
BONDS. REALLY. WELL.



Exhibition Catalogue 2018



## Water-jet Cutting



Water-jet cutting is strongly recommended for thicker materials. This is an attractive alternative to classical stamping with regard to both technology and cost-efficiency. This type of cutting gives precise seals, non-adhesive (NH) and up to 100mm thick, which can be produced without additional moulds. The process is suitable for both the production of large series but also for production of smaller quantities or individual parts. The latter possibility poses a perfect solution for prototype production. No moulds are required for the production of seals on our CNC-controlled water-jet cutting facility, only CAD data in DXF or DWG format.

## Stamped Parts



Stamping is suitable for seals with adhesive on one side or both sides. The basis for the production of the stamping moulds are CAD data in DXF or DWG format. By this method we manufacture small series as well as large quantities and can act flexibly on our customers' behalf.

## DRG Alu-Butyl Sealing Patch



This self-adhesive alu-butyl sealing tape with volume stability is permanently bonded with a tear-resistant aluminium foil. This combination provides ideal properties.

### Product Advantages

Smooth membrane surface, inbuilt reinforcement, no bimetal effect, easy to use, non-corrosive, water-vapour proof, compliant with the requirements of the IVD (Association of Sealants Industry), information leaflet no. 5, immediately functional, free from solvents and bitumen, compatible with bitumen, resistant to ageing, weather and UV.

### Applications

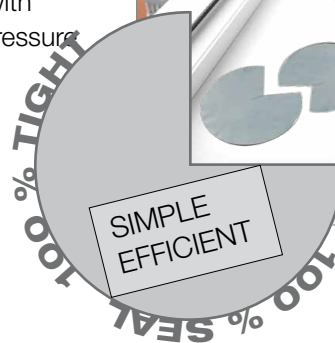
For the industry and construction sector (e.g. silo construction, ventilation systems, saw-tooth roof construction, industrial buildings, roof glazing, conservatories, solar systems, industrial construction, fascia sealing, automobile construction, caravans, roof hoods and light domes, cornice seals, expansion gaps etc.)

### Tips for Use

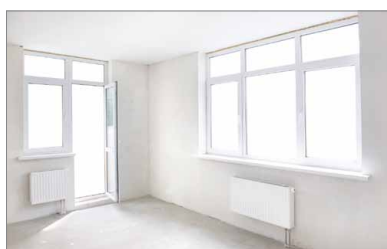
The holding surface must be dry, sound and free from dust and solvents. Porous substrates such as concrete, plaster etc. must be treated with BUBI-LF adhesive primer. Pressure applied as necessary using a pressure roller. Folds and creases should be avoided or carefully rolled out.

### Product Characteristics

- 100% seal
- Immediately functional
- Simple application



Shapes stamped according to customer requirements!





## DRGpor HW 140

### The new revolutionary structural panel



The high-performance insulating DRG structural panel is used when other materials reach their limits.

This new structural panel combines everything you need for a quality sub-construction of your windows and doors. Thanks to the excellent insulation properties all thermal bridges are eliminated.

The stability and ease of screw removal underline its universal use. This panel was constructed to fulfil your demands on a structural panel.

#### There is a wide range of possible applications:

- Thermal insulation under stress
- Sub-construction of windows and door elements
- Widening of doorframes
- In wet-rooms and humid rooms
- Insulation of projecting windows
- Dry wall construction
- Façades
- Flat roof construction
- etc.

#### Product characteristics:

- High quality thanks to optimum raw materials and excellent state-of-the-art insulating properties
- Economic alternative to conventional structural panels
- Concealable and combinable with other materials - Suitable in passive, low-energy and plus energy houses
- Very lightweight, low density Sehr leicht, wenig Raumgewicht
- Water repellent due to hydrophobic raw material
- No swelling
- Temperature resistant
- Resistance to mould and rotting
- Fire classification according to EN 13501-1 E
- Excellent bonding – with almost all adhesives
- All conventional tools can be used on this material
- Increased stability in spite of low net weight – difficult to break
- Easy to coat using a wide range of top coats (user-friendly)
- Environmental certificate, eco-friendly due to cell content air, recyclable, non-rotting
- resistant to ageing

DRG-por HW 140 is easy to process and can be drilled, sawed, milled and much more.

The new structural panel is a DRG product!



Quality made in Austria

## DRG Window Connection Membrane TWIN A-V



DRG-Window Connection Membrane TWIN A-V can be plastered over and consists of a fleece composite material with a fully adhesive surface and is used for reliable bridging of window, door and masonry gaps in accordance with EnEV (German Energy Saving Ordinance). Due to the variable sd-value this membrane can be used indoors and outdoors. The window connection membrane can also be made with a two-way adhesive strip.

### Properties

- Moisture variable – for use indoors and outdoors
- Watertight against driving rain
- UV-stable
- Alkali-resistant
- Can be plastered over

### Product advantages

- Watertight
- Simplified installation – only one tape for indoors and out
- Specifically absorbs movement of the structure due to its good elasticity
- The fleece does not detach itself from the substrate even under heavy stress
- Other versions available on request

## DRG-pre-compressed Joint Sealing Tapes



The DRG pre-compressed sealing tape for joints and gaps is made from impregnated foam.

It serves as a primary seal on gaps and connections exposed directly to the elements from 300 to 600 Pa. Its reliable seal ensures that the value of the basic structure is preserved.

### Applications

- Window installation, interior fittings
- Façade construction (also natural stone)
- EWIS, timber-frame construction
- Wood, solid, dry and metal construction
- Prefabricated buildings, container construction, noise barrier construction, roof construction (e.g. wind-tight connection of membranes) and many more

### Generally applicable for BG1 - Colours / Packaging

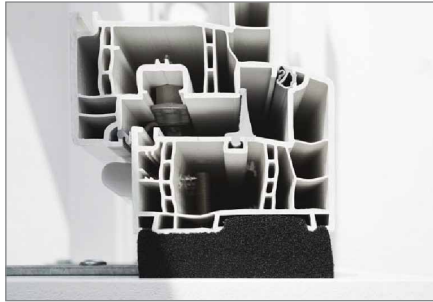
Grey/black

Pre-compressed on a roll

Not pre-compressed in 2 m strips on a reel up to 400m.



## DRG Multiband 3D



### A tape for all functional areas in the window expansion joint:

DRG-Multiband 3D is a new, specially impregnated and pre-compressed multi-function tape to provide tightness to air and driving rain as well as acting as insulation to window movement joints, under the motto 'more tight inside than out'.

<b>Room side (indoors):</b>	airtight according to DIN 18452 BG R ÖNORM B 5320
<b>Insulation level:</b>	soundproofing, thermal insulation
<b>Side most exposed to weather: (outdoors)</b>	wind and raintight, breathable

### Product Advantages

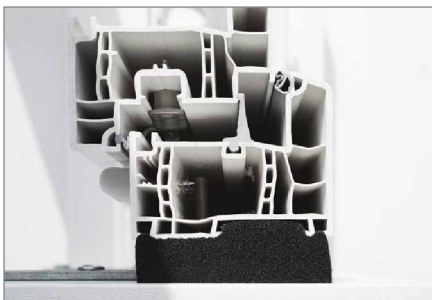
- Consistent quality guaranteed by regular internal and external monitoring, tested by BBS Institut für Bauphysik Wolfenbüttel, ift Rosenheim, MPA Bau Hannover
- **Airtight in accordance with DIN 18542 BG R (ÖNORM B 5320)**
- Inner side marked in colour
- Fire protection class B1 in accordance with DIN 4102-1
- Thermal and soundproofing
- **Very good acoustic insulation values (59 dB)**
- **Resistant to driving rain  $\geq 600$  Pa according to DIN 18542 BG1**
- Permanent gap drying
- Compatible with adjoining building materials in accordance with DIN 18542 BG 1
- Adjusts to unevenness in the gap and fills cavities
- Generally compatible with paint coatings but this should be tested
- Individual roll marked with its gap width suitability
- It is possible to shrink-wrap the individual rolls in film to avoid soiling or undesired expansion of the tapes
- Free from solvents, non-hazardous material
- 10-year functional guarantee according to the manufacturers' conditions\*
- Storability: 1 year, stored dry in original packing at  $< 20^{\circ}\text{C}$

\* The properties depend partly on the degree of compression of the tape.

### Colour/ Packaging

- Grey, black (inner side marked with colour)
- Pre-compressed on roll

## DRG Multiband 3D *Premium* 900



### A tape for all functional areas in the window expansion joint:

DRG-Multiband 3D is a new, specially impregnated and pre-compressed multi-function tape to provide tightness to air and driving rain as well as acting as insulation to window movement joints, under the motto 'more tight inside than out'.

<b>Room side (indoors):</b>	airtight according to DIN 18452 BG R ÖNORM B 5320
<b>Insulation level:</b>	soundproofing, thermal insulation
<b>Side most exposed to weather (outdoors):</b>	wind and raintight, breathable

### Product Advantages

- Consistent quality guaranteed by regular internal and external monitoring, tested by BBS Institut für Bauphysik Wolfenbüttel, ift Rosenheim, MPA Bau Hannover
- **Airtight 0.003 m<sup>3</sup> m**
- Inner side marked in colour
- Fire protection class B1 in accordance with DIN 4102-1
- Thermal and soundproofing
- **Very good acoustic insulation values (63 dB)**
- **Resistance to driving rain tested to 900 Pa internally**
- Permanent gap drying
- Compatible with adjoining building materials in accordance with DIN 18542 BG 1
- Adjusts to unevenness in the gap and fills cavities
- iGenerally compatible with paint coatings but this should be tested
- It is possible to shrink-wrap the individual rolls in film to avoid soiling or undesired expansion of the tapes
- Free from solvents, non-hazardous material
- 10-year functional guarantee according to the manufacturers' conditions\*
- Storability: 1 year, stored dry in original packing at < 20°C

\* The properties depend partly on the degree of compression of the tape.

### Colour/ Packaging

- Grey, black (inner side marked with colour)
- Pre-compressed on roll



## Adhesion of façades made easy: with DRG-Coro 9915 SPT!



Modern adhesive techniques open new perspectives for façades and glass façade construction. Using suitable adhesive systems façade constructions achieve firmness that allow delicate, seamless glass façades and structural glazing façades of the highest aesthetic value. In such constructions the panes become a support element of the façade, which poses the highest of demands on the adhesive system used and can be achieved with the product DRG-Coro 99XX SPT for glass façades. Set new aesthetic measures in the design of façades and technology!

### **Fast, safe and for always**

Bonded glass façades belong to the most sophisticated tasks in façade construction with regard to the demands on stability and durability. The DRG-Coro SPT series are 2-sided adhesive tapes with exceptionally strong bonding which have been developed especially for the adhesion of façade elements of glass and structural glazing façades. In façade construction they connect glass elements and their sub-structure safely and permanently. Adhesion takes place faster and more rationally than with conventional joining methods, whatever the material of the joining partner may be.

## DRG Liquid Surface Protection Film ...



... is a water-based pull-off coating on, made from 100% recyclable polyvinyl butyral.

This protective film is a water-based membrane which is ready for use. It can be applied to glass, polyester, synthetic materials, metal and other surfaces. The protective film can easily be pulled off the substrate. The product is applied by strokes, rolling, spraying or airless spraying.

## Primer Pen



A primer pen to enhance adhesion of plastering strips, particularly on surfaces with low surface energy (e.g. special dirt-repellent paints, varnishes, powder coating and membranes).



## DRG-Cladseal EPDM strips



Rubber sealing strips compliant with EN 14909 in accordance with DIN 18195-2 Construction Seal for bases

### Product advantages

- Does not absorb water, water does not influence the material
- High temperature resistance
- Chemical stability, EPDM does not change after contact with other materials
- Does not contain softeners or additives - recyclable
- Resistant to pressure load

### Procedure

Attach Cladseal strips to the construction elements using adhesive paste 3300.

The substrates must be dry, sound and free from oil.

Position can be changed until hardening of the adhesive paste.

We recommend prior treatment of porous substrates with Primer 9900.

### Applications

- Water and wind-tight seal of construction gaps outdoors
- For use on many substrates, such as: PVC, aluminium, steel, galvanised steel, glass, acrylic glass, concrete, aerated concrete, lead, wood, bitumen, EPDM, butyl....

## DRGplast FK Membrane Adhesive



### The strong and flexible membrane adhesive

DRG-Plast FK adhesive/sealant is solvent-free, ready-for-use, permanently form-stable, odourless, resistant to moisture, thixotropic and with high initial strength and additional gap-filling, sealing properties. DRG-Plast FK forms an air-wind- and raintight adhesive/sealing film in accordance with the requirements of EnEV 2002 (German Energy Conservation Regulation) and DIN 4108-7.

### Areas of use

For adhesion and seals of breathable and/or moisture-tight membranes and fleece made from PP, PE, PVC, EPDM or mixed fabric on substrates such as concrete, wood, wood-fibre panels, metal, plaster, plasterboard. Particularly suitable for air-tight adhesion and fixing window joint membranes and for adhesive of underlay in roof regions.



## DRG-Spray Adhesive 2000



DRG Spray Adhesive 2000 is a highly effective sprayable contact adhesive.

### Product Advantages

The sprayable adhesive is very self-adhesive, dries quickly and has high resistance to ageing. The rotating nozzle for various angles of spraying provides for easy application.

### Applications

For adhesion of textiles, fleece, paper, photos, cartons, wood, leather and various synthetic materials. It is particularly suitable for the automobile sector, in workshops, in the construction of switch boxes and ventilation etc.

### Product Properties

- Highly self-adhesive
- Easy to use
- Minimal drying period
- Rotating nozzle for various angles of spraying

## Spray Primer 2001



DRG Spray Primer is a highly efficient sprayable contact adhesive.

### Product Properties

The sprayable adhesive is highly self-adhesive, dries quickly and is very resistant to ageing. The nozzle can be rotated for different spray angles, simplifying work.

### Application

It is used in the building sector to bind loose, absorbent, fibrous or sandy surfaces in order to pre-treat these optimally and professionally for the following adhesion with sealing tapes or sealing materials on polyacrylate, synthetic or butyl rubber basis.

### Product Properties

- Highly self-adhesive
- Easy to use
- Minimal drying period
- Rotating nozzle for various angles of spraying

## DRG 4.0



## Contact person

### Office

Phone: +43 (6216) 20510-0

E-mail: [office@drg.at](mailto:office@drg.at)



Alfred Püschel



Norbert Rosenkranz



Markus Walchhofer

### Sals area: DE/AT/CH/IT and worldwide

Alfred Püschel

Phone: +43(664)457 74 75

E-mail: [alfred.pueschel@drg.at](mailto:alfred.pueschel@drg.at)

### Sals area: Upper Austria, Salzburg North

Norbert Rosenkranz

Phone: +43(664)4020951

E-mail: [norbert.rosenkranz@drg.at](mailto:norbert.rosenkranz@drg.at)

### Sals area: Salzburg South, Carinthia, Styria

Markus Walchhofer

Mobil: +43(664)944 73 78

E-mail: [markus.walchhofer@drg.at](mailto:markus.walchhofer@drg.at)



SEALS. REALLY. WELL.

CUTS. REALLY. WELL.

BONDS. REALLY. WELL.

